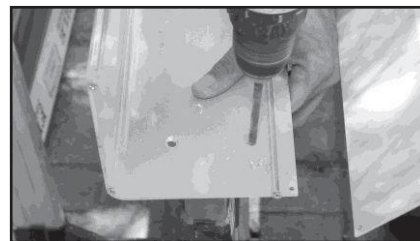
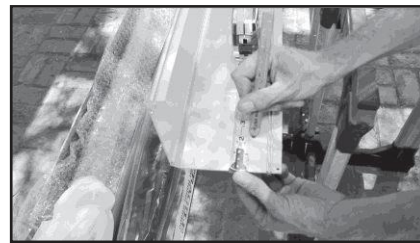


Baby Grande or Grande Shade with Crank, Housing, and Side Rails
Installation Instructions

Tools Needed	Hardware Provided (per shade)	Hardware Needed
<p align="center"> Drill 3/8" Metal Drill Bit 1/4" Masonry Drill Bit Measuring Tape Pencil 4" Level Phillips #2 Driver Manual Screwdriver (Phillips) </p>	<p align="center"> End Caps (Brackets) (2) Housing (1) Shade Fabric Tube (1) Side Rails (2) Deco Caps (6 -8) Hand Brace (1) </p>	<p align="center"> 5/16" X4 1/2" Lag Screws or Appropriate (4 or more) 3/8" Flat Washers or Appropriate (4 per shade) 2 1/2" Drywall Screws (6-8) Sheet Metal Screws (6—8) if mounting rails to L Channel Brackets </p>

[*Instruction Pictures Go From Left to Right]

1. Prepare Back of Housing

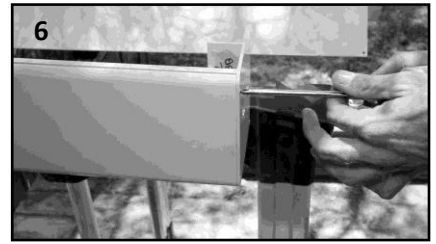
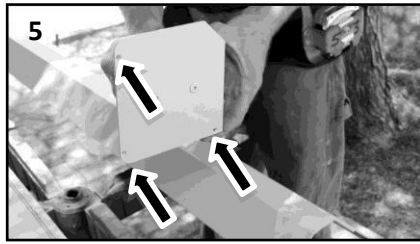
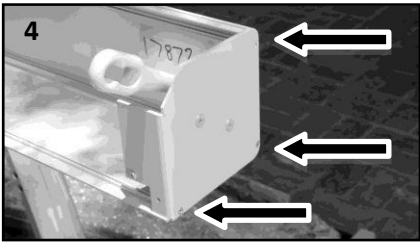
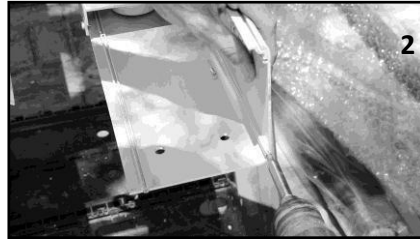


FOR BABY GRANDE: Starting at one at end of housing, make two mounting hole marks 1 1/4" in from end cap on your housing. This is so that the bolt heads will not be behind the fabric roll so they cannot contact the fabric and damage it. You will need to 'toe nail' the bolts (insert at an angle.)

FOR GRANDE: Starting at one end of the housing, make two mounting hole marks 2" in from the end cap on your housing.

Using a 3/8" metal drill bit, drill the two mounting holes. Repeat this process on other side of housing with other end cap.

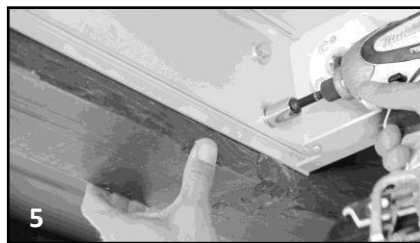
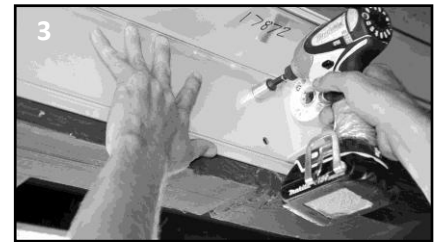
[Note: Top mount holes are on top of the housing, surface mount holes are on back of the housing. Pictures above demonstrate surface mount holes.]



[STEPS 1-3] Start at one end of housing and remove 3 screws attached to housing and set aside. Repeat same process on other side of housing.

[STEPS 4-6] Align gear bracket up to screw holes (holes you just removed screws from) and secure bracket using 3 screws you set aside with Phillips screwdriver (Arrows pointing to holes in bracket). Repeat same process on opposite side with idler bracket.

2. Hang Back of Housing and Side Rails -- 2 Person Job



FOR INSIDE MOUNT: You need to install the L Channel brackets before the housing as they go the full height of the opening and behind the housing. Cut the "L" Channel Brackets to required length. For most installations these should go from the floor to the top of the opening, continuing along the sides of the shade housing on either side. Next, install them. The back (2 1/2" leg) of the brackets should be lined up with the back of the housing with the 1" leg flush against the inside of the opening. Make sure the bracket is mounted level to the inside of the opening, going from top to bottom. It is recommended that you pre-drill the bracket prior to final installation to the inside of the opening (do not pre-drill for the side track attachment at this time). Put in the top mounting fastener, then level the channel and put in the bottom fastener to maintain the level. Complete this installation by securing bracket with additional fasteners, top to bottom, ensuring the bracket remains level.

[STEPS 1-3] Once you decide where your housing will hang, hold back of housing up to surface and starting on one side, drill starter holes into mounting surface and secure first lag screw and washer on top hole. Make sure your housing is level. Repeat process on other side of housing.

[STEPS 4-5] Once housing is secure by itself, bolt your final bottom two lags and washers on each side. Bolts must be installed in upper corner of box—keep clear from center of box



Remove hood screws on both sides of housing located underneath brackets. Set aside.

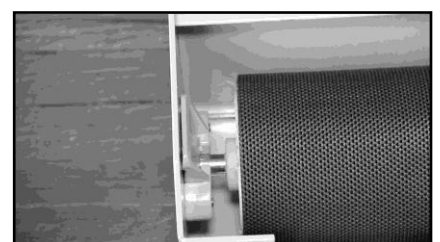
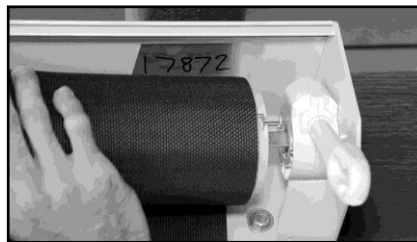


FOR OUTSIDE MOUNT, starting on one side, place side rail on flat surface directly underneath housing, making sure it is flush (#1).

FOR INSIDE MOUNT starting on one side, place side rail on the 2 ½" leg of the L Channel bracket.

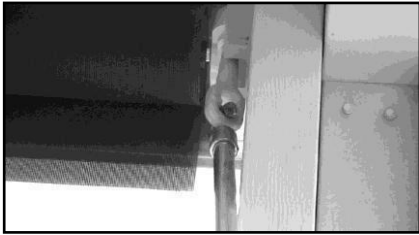
Secure the top hole using an appropriate screw for your mounting surface (#2). Making sure the side rail is level, secure the remaining screws (#3, #4). Repeat this process on the other side (#5).

3. Hang Tube With Fabric - 2 Person Job



Hold tube with fabric up to back housing. Before installing tube, first insert bottom slats of shade into side rails on both sides. Remove bolt from cradle idler and place white bearing on round pin. Starting on gear end, insert square pin end of shade tube into hole in end cap bracket. On opposite side, slide round pin end of tube into cradle idler end cap slot. Replace bolt on cradle idler to lock in place.

4. Test Shade



Slide hook end of hand brace into eyelet of gear on shade. Turn hand brace to rotate gear. Run shade up and down a few times to be sure there are no side rail adjustments needed.

5. Install Deco-Caps

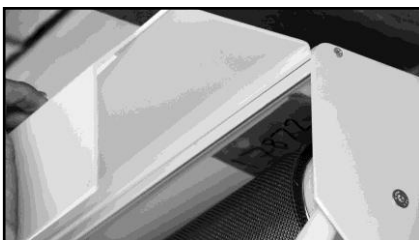


NOTE: Skip to step #6 if side rails are a side mount. Snap caps provided into mounting holes on side rails.

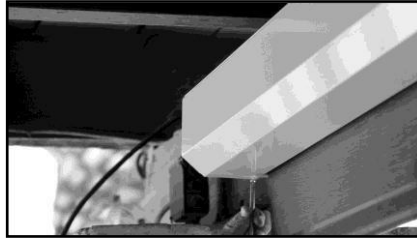
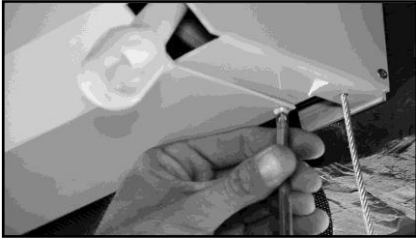
6. Install Front/Bottom Housing



Before securing front housing, first rotate gear to lie vertical.

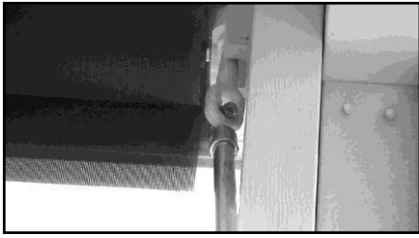


Set the housing into the groove at the top and bring down to set into place.



Install the two hood screws you put aside earlier, one on each side.

7. Operate Shade



Slide hook end of hand brace into eyelet of gear on shade. Rotate hand brace in one direction to raise. Rotate in opposite direction to lower. Shade rolls up and down on side rails.

You're done! Enjoy!

